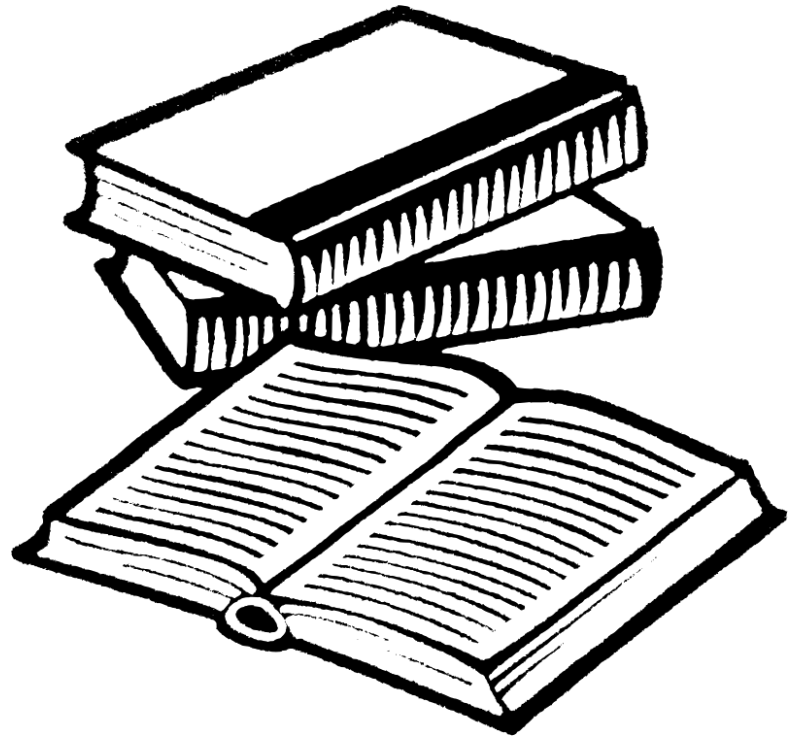


Capstone Guidelines

SSELab
SOCIAL SCIENCE
EXPERIMENTAL
LABORATORY



Overview



- 1 Capstone research proposal
- 2 CITI certificate & IRB Approval
- 3 Funding Application
- 4 Coding Support
- 5 Other Details

1 Capstone research proposal

The capstone student should have a concrete and well defined capstone research proposal.

The experimental instructions and the description of the experiment are mandatory in the next steps of using SSEL services.

The capstone research proposal has to be approved and reviewed by the capstone mentor.

The research also has to follow SSEL guidelines →. For example, SSEL does NOT run experiments that use deception.

② CITI certificate & IRB Approval

1

Register on the CITI Program website.

[CITI Website →](#)

2

Select 'New York University Abu Dhabi' as your organizational affiliation.

3

Complete Steps 1 - 6, and when you get to Step 7 select the course you wish to enroll (Investigators conducting Exempt Research/ Social & Behavioral Course).



Please note that both the capstone student and the mentor (and any other collaborators) must complete the CITI training!

2 CITI certificate & IRB Approval

IRB Blanket Approval

IRB approval is required in order to ensure that your research meets ethical standards!

NYUAD IRB has granted blanket approval for experiments carried out in the SSEL laboratory. All experiments using SSEL IRB must satisfy the **lab's protocol**. Students must submit an **approval form** in order to use the SSEL IRB or any other SSEL services.

Approval Form
In-Person
Experiment

Approval Form
Online
Experiment

SSEL IRB Protocol

1. Subjects must make one or more decisions. If more than one decision is made, the exact number of decisions must be known, or if it is not known, then the stopping rule/end condition must be known.

2. Subjects are told if their payments are dependent on their own decisions or if the outcome also depends on the decisions of others. If it depends on the decisions of others, then the way in which subjects are grouped is also explained to them.

3. Subjects are told what information is commonly known and what is private. That is, if a subject receives a piece of experimental information in private, all subjects know that others may have such private information.

4. If subjects make decisions in a practice round, those decisions do not affect their final payoffs, and all subjects know this.

3 Funding Application

- Capstone students should aim to fund their projects through the Social Science Department Capstone Funding.
- Capstone Funding Applications open in both Fall and Spring semesters. [Application →](#)
[Deadlines →](#)
- Please apply in time in order to secure funding for your capstone project. *The turnaround time for processing applications is 3 weeks.*
- In case your capstone funding award is not enough to run your experimental capstone, you may apply for additional SSEL Capstone Funding.



4 Coding Support



SSEL Student Research Assistants can offer experimental coding support.

In order to qualify, you must provide SSEL with a sketch of the experiment's screens and have a list of detailed actions of the player(s).

The above must be approved by your capstone mentor!

The experimental software must be tested and approved by the SSEL Technical and Operational Coordinator.

Please note that coding support is provided upon availability!

5 Other Details

Running experiments

After completing all the required steps mentioned before, you will finally be able to run experimental sessions! Whether you conduct in-person or online experiments you will receive SSEL support with running the experiment and paying subjects.

Booking the lab

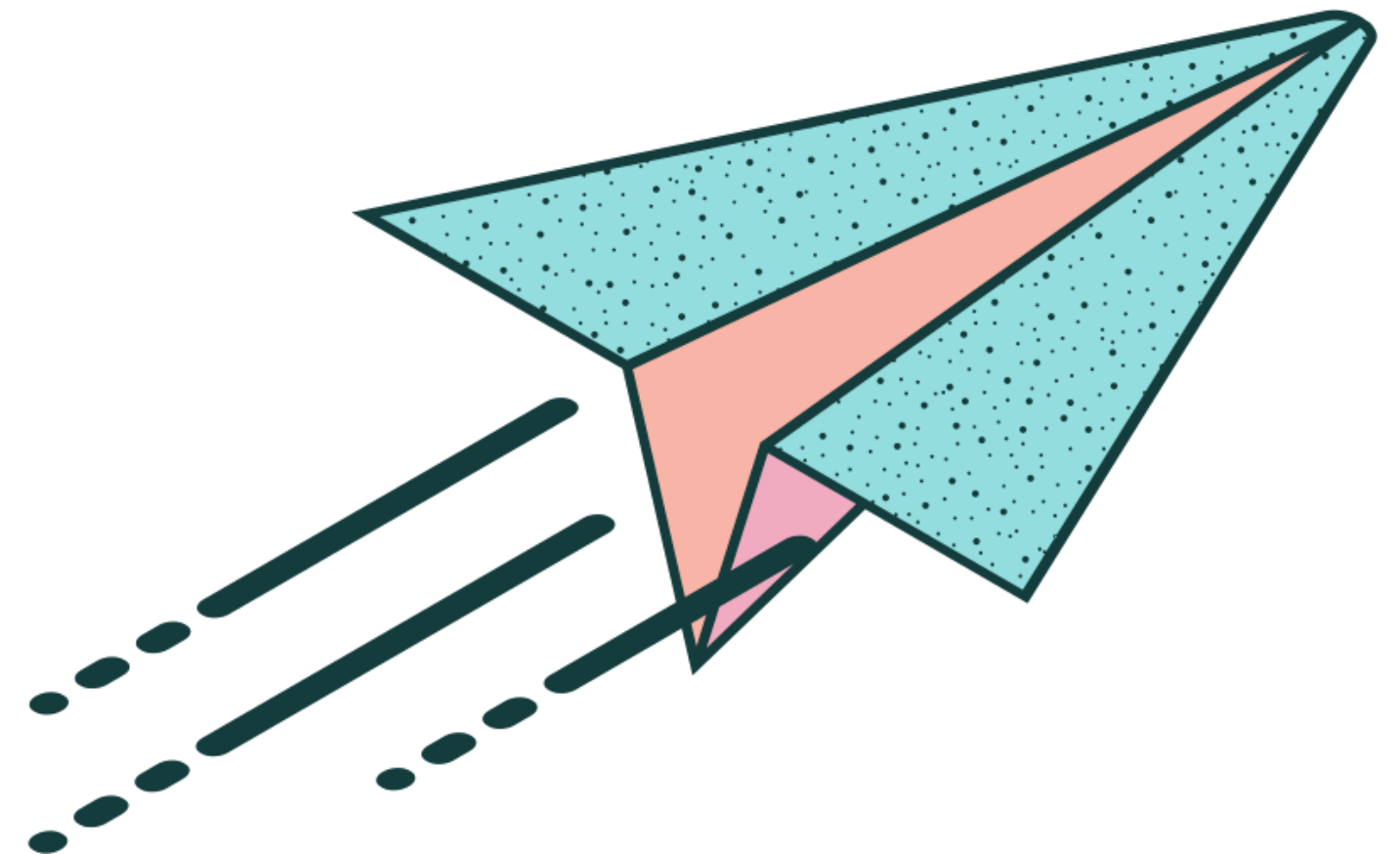
In case you are running an in-person lab experiment at the SSEL physical lab, you are required to book the lab to run your sessions.

Keep your mentor in the loop

It is important to keep in touch with your capstone mentor. You need to get their approval on your experimental design and experimental software.

Start early!

Running experiments is a lengthy process that contains of multiple steps. It is important to start early in order to complete a successful experimental capstone!



Thank you!

More information at
ssel-lab.com

SSELab
SOCIAL SCIENCE
EXPERIMENTAL
LABORATORY